



Ersatzteilliste / Spare parts list

Liste des pieces de rechange

Lista de repuestos

für / for / pour / para:

	Projekt-Nr. Order-no. No. de commande No. de pedido	Förderer-Typ conveyortype transporteur type transportadora tipo
Item		
BE-04	42658	BWG 800/320/4 AA=110,00m

project designation
42658 BWG 800/320/4 AA=110,00m

In case of orders and inquiries
please indicate project and
article-no!

contents

denomination	article-no.	page
belt bucket elevator	30056576	3
drive pulley	30024370	5
pillow block bearing	30000684	7
pillow block bearing	30000683	9
straight-run control	20691251	11
take-up pulley,cpl	30025001	13
tension brg,loose side	30015506	15
tension brg,fixed side	30015516	17
Parallel tensioning device	21645151	19
straight-run control	20691251	21
belt bucket strand	30060926	23
drive unit	30060964	25
accessories	30035323	27
level monitoring	30030405	29

project designation
42658 BWG 800/320/4 AA = 110,00m

In case of orders and inquiries
 please indicate project and
 article-no!

denomination article-no.
belt bucket elevator 30056576

family characteristics/dimensions drawing
112060 BW-G 800/320/4 30056576

page

3

quantity of order

	item	article	quantity	denomination	characteristics/dimensions	material	norm	weight
	1	30060916	1	product	BW-G 800/320/4			10483,088
	2	30060964	1	drive unit	B3DH12/FAD516/EOC			3463,360
	5	30035323	1	accessories	AD/NJ5/MS24/NCB15			3,502
	6	30060966	1	assembly material	BW-G800/320/4			15,816

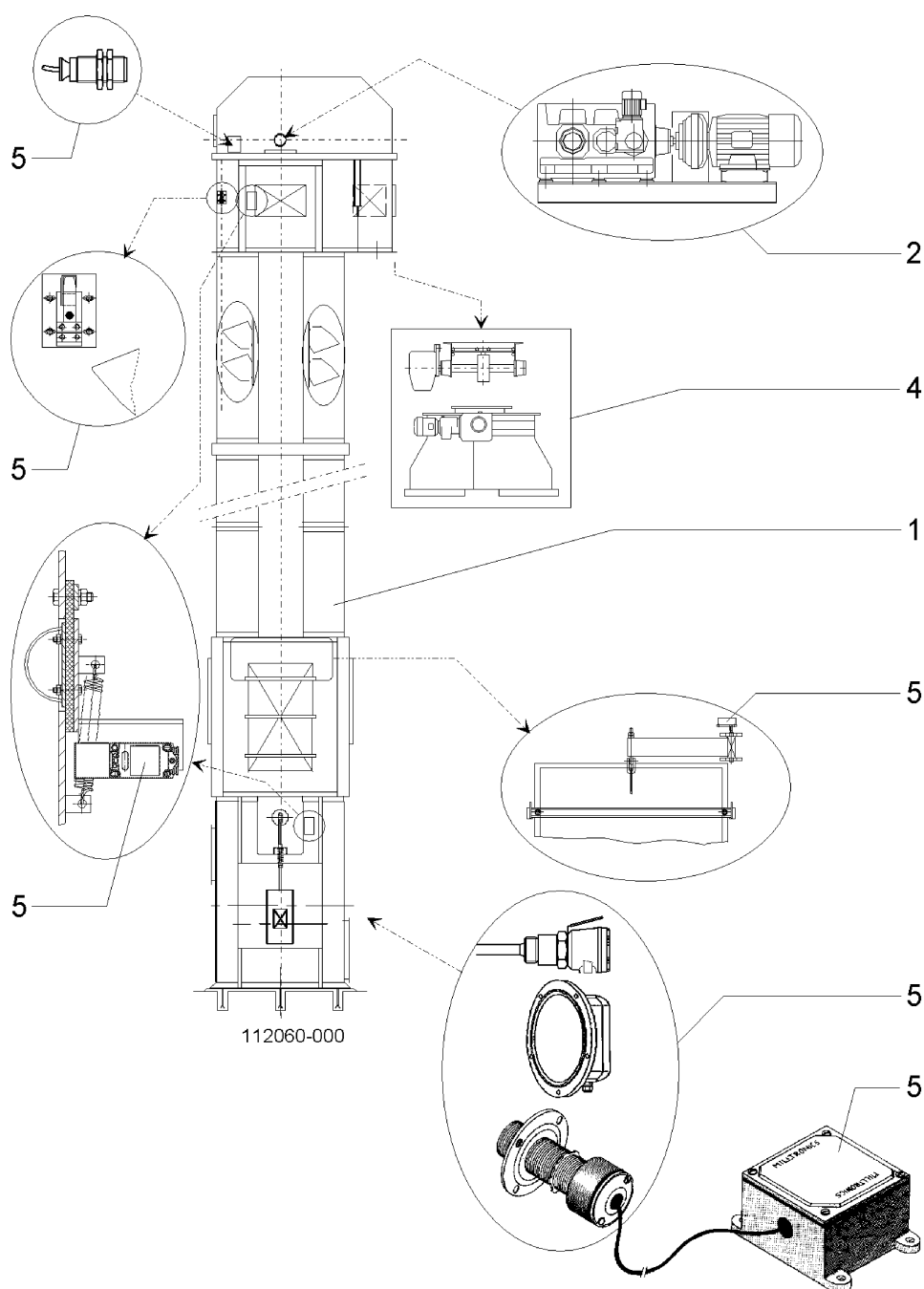
project designation
42658 BWG 800/320/4 AA = 110,00m

In case of orders and inquiries
please indicate project and
article-no!

denomination article-no.
belt bucket elevator 30056576

family characteristics/dimensions drawing
112060 BW-G 800/320/4 30056576

page

4

project designation
42658 BWG 800/320/4 AA = 110,00m

In case of orders and inquiries
 please indicate project and
 article-no!

denomination article-no.
drive pulley 30024370

family characteristics/dimensions drawing
704009 800/1125/B3DH12 30024370

page

5quantity of order

	item	article	quantity	denomination	characteristics/dimensions	material	norm	weight
	1	30024369	1	drive shaft	200/240/B3DH12	10503		707,000
	2	30004135	1	drum body, steelwor	800/1125/240			1066,368
	3	30000684	1	pillow block beari	SN3044LE23044K			155,300
	4	30000683	1	pillow block beari	SN3044F23044K			155,300
	5	21525351	2	tension unit	3006/240/305			14,300
	6	08965190	2	casing sealing ring	200			6,646
	7	08478590	2	clamping ring	200	10038		6,000
	8	21658951	1	friction lining	1125x1000			224,000
	9	00054370	80	half-round screw	M16x45		607	0,121
	10	00021570	80	spring ring	A16	FSt	127	0,009
	11	00100870	6	headless pin	M12x30	45H	914	0,019
	12	00976270	2	button head lubrica	M22R1/4"			0,010
	13	00127670	4	hexagonal screw	M36x150	8.8	931	1,560
	14	00158070	4	hexagonal nut	M36	8	934	0,393
	15	00018470	8	washer	B37	10038	125	0,092
	17	00144970	4	hexagonal screw	M24x120	8.8	933	0,535
	18	00156670	4	hexagonal nut	M24	8	934	0,110

project designation
42658 BWG 800/320/4 AA = 110,00m

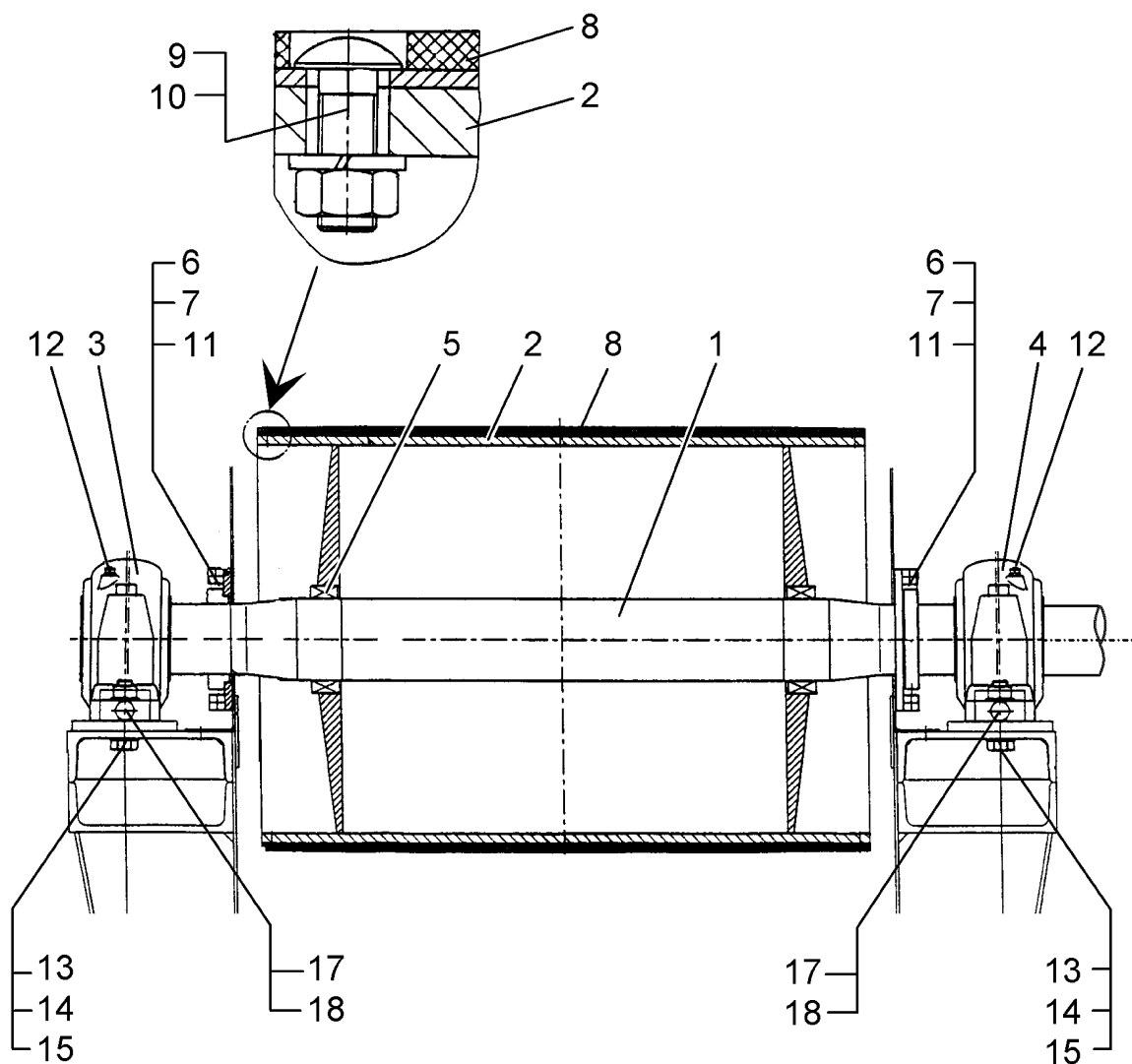
In case of orders and inquiries
please indicate project and
article-no!

denomination	article-no.
drive pulley	30024370

family	characteristics/dimensions	drawing
704009	800/1125/B3DH12	30024370

page

6



project designation
42658 BWG 800/320/4 AA = 110,00m

In case of orders and inquiries
please indicate project and
article-no!

denomination article-no.
pillow block bearing 30000684

family characteristics/dimensions
711000 SN3044LE23044K

drawing

page

7

quantity of order

	item	article	quantity	denomination	characteristics/dimensions	material	norm	weight
	1	00402890	1	casing of pillow bl	SN3044LE			114,500
	2	00077870	1	bearing	23044K		635	30,500
	3	00342370	1	tension sleeve	H3044		5415	10,300

project designation
42658 BWG 800/320/4 AA = 110,00m

In case of orders and inquiries
please indicate project and
article-no!

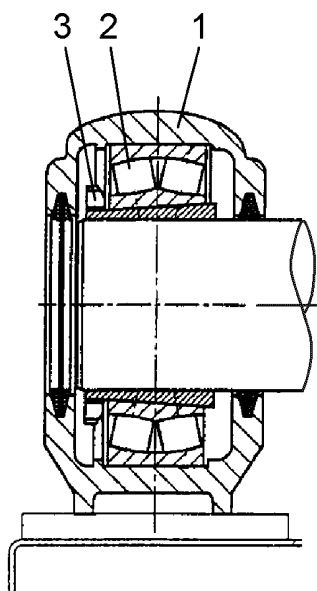
denomination article-no.
pillow block bearing 30000684

family characteristics/dimensions
711000 SN3044LE23044K

drawing

page

8



project	designation
42658	BWG 800/320/4 AA = 110,00m

In case of orders and inquiries
please indicate project and
article-no!

denomination	article-no.
pillow block bearing	30000683

family	characteristics/dimensions
711000	SN3044F23044K

drawing

page

9

quantity of order

	item	article	quantity	denomination	characteristics/dimensions	material	norm	weight
	1	00405490	1	casing of pillow bl	SN3044F			114,500
	2	00077870	1	bearing	23044K		635	30,500
	3	00342370	1	tension sleeve	H3044		5415	10,300

project designation
42658 BWG 800/320/4 AA = 110,00m

In case of orders and inquiries
please indicate project and
article-no!

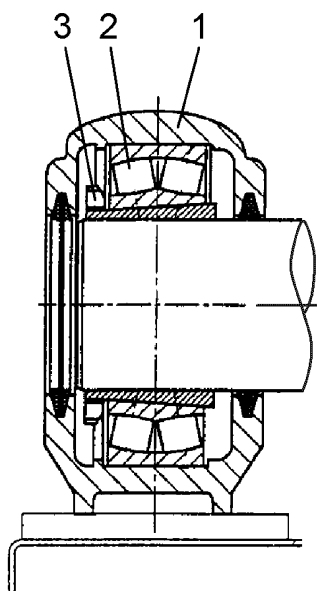
denomination article-no.
pillow block bearing 30000683

family characteristics/dimensions
711000 SN3044F23044K

drawing

page

10



project designation
42658 BWG 800/320/4 AA = 110,00m

In case of orders and inquiries
 please indicate project and
 article-no!

denomination article-no.
straight-run control 20691251

family characteristics/dimensions drawing
725003 Initiator 40x40 20691251

page
11

quantity of order

	item	article	quantity	denomination	characteristics/dimensions	material	norm	weight
	1	00474570	1	plate	6	10038		0,900
	2	00364070	1	angle	60x40x5	10038	1029	0,470
	3	00471070	2	plate	4	10038		0,020
	4	00471070	1	plate	4	10038		0,320
	5	00510870	1	flat steel	6x30	10038	1017	0,190
	6	00396570	1	pipe	88,9x3,2	10112	2458	0,300
	7	00608290	1	rubber strip	10x140x180	93903		0,400
	8	00601390	1	tension spring	20x2,5x165	14310	2097	0,135
	9	00106870	2	hexagonal screw	M10x40	8.8	931	0,035
	10	00154370	2	hexagonal nut	M10	8	934	0,012
	11	00021070	2	spring ring	A10	FSt	127	0,003
	12	00130770	4	hexagonal screw	M6x30	8.8	931	0,008
	13	00159770	4	hexagonal nut	M6	14301	934	0,003
	14	00023570	4	spring ring	A6	FSt	127	0,001

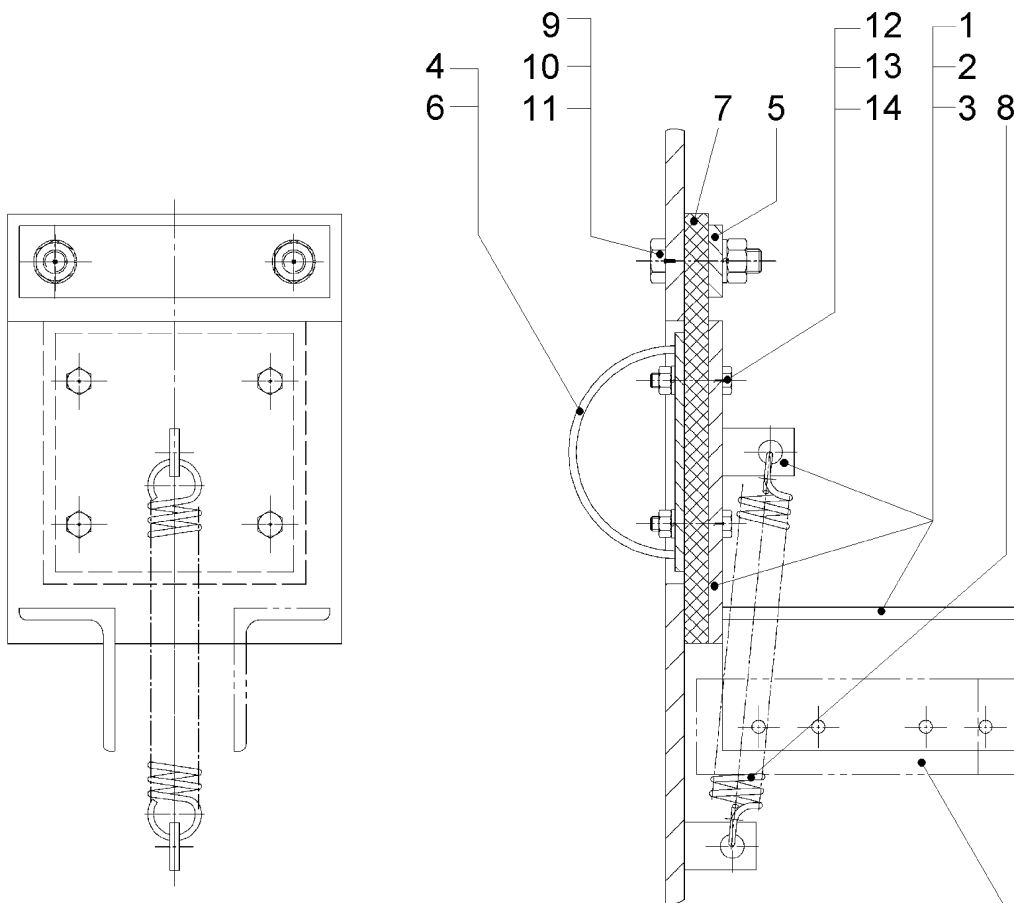
project designation
42658 BWG 800/320/4 AA = 110,00m

In case of orders and inquiries
please indicate project and
article-no!

denomination article-no.
straight-run control 20691251

family characteristics/dimensions drawing
725003 Initiator 40x40 20691251

page
12



siehe Zubehör / see accessories /
voir accessoires / a ver accesorios

project designation
42658 BWG 800/320/4 AA = 110,00m

In case of orders and inquiries
 please indicate project and
 article-no!

denomination article-no.
take-up pulley,cpl 30025001

family characteristics/dimensions drawing
704008 800/1150/M18x1 30025001

page

13

quantity of order

	item	article	quantity	denomination	characteristics/dimensions	material	norm	weight
	1	21645851	1	bar drum	800/1150			475,300
	2	06675490	1	tail axle	800/120/80	10503		118,000
	3	30015506	1	tension brg, loose s	80			32,416
	4	30015516	1	tension brg, fixed s	80/M18x1			33,126
	6	21524351	2	tension unit	3006/120/165			3,000

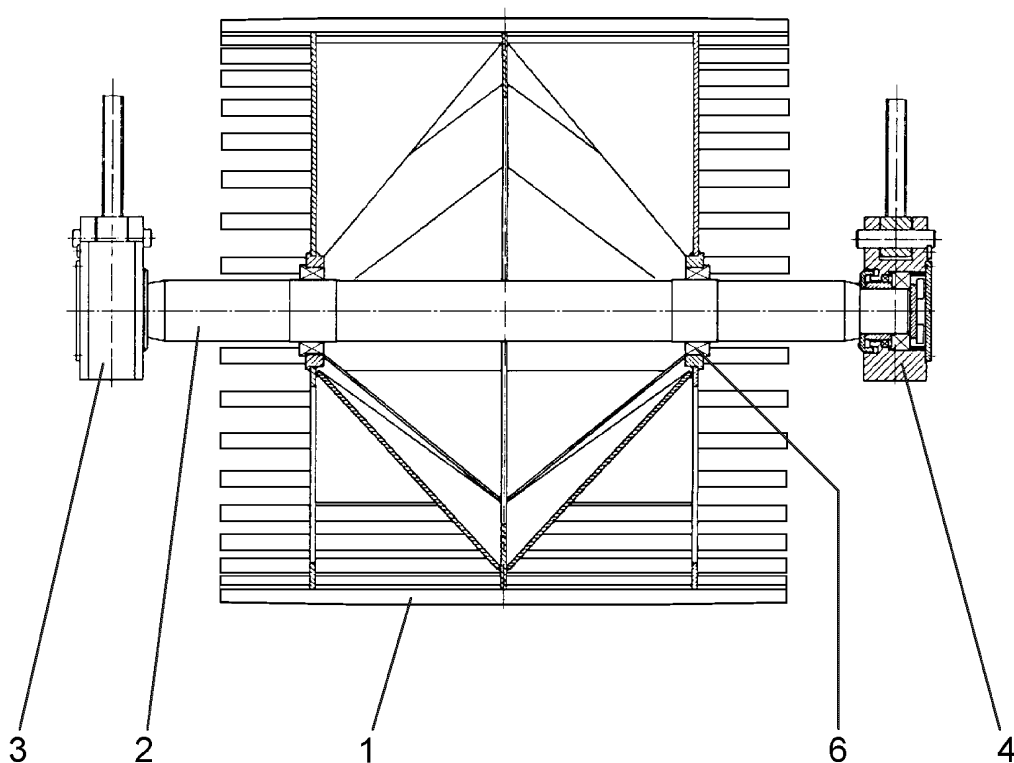
project designation
42658 BWG 800/320/4 AA = 110,00m

In case of orders and inquiries
please indicate project and
article-no!

denomination article-no.
take-up pulley, cpl 30025001

family characteristics/dimensions drawing
704008 800/1150/M18x1 30025001

page

14

project designation
42658 BWG 800/320/4 AA = 110,00m

In case of orders and inquiries
 please indicate project and
 article-no!

denomination article-no.
tension brg,loose side 30015506

family characteristics/dimensions drawing
714017 80 30015506

page

15

quantity of order

	item	article	quantity	denomination	characteristics/dimensions	material	norm	weight
	1	30015507	1	tension bearing bod	80	10570		24,060
	2	00366090	1	bearing lid	80	10038		2,000
	3	00583790	1	end lid	80	10038		0,500
	4	00347390	1	bush	105/80/48	10503		1,000
	5	30015151	1	labyrinth seal	80	10570		2,600
	6	00069270	1	bearing	22216		635	2,050
	7	00220870	1	shaft sealing ring	A105x130x12	NB	3760	0,050
	8	00090370	6	cheese-head screw	M10x25	8.8	912	0,026

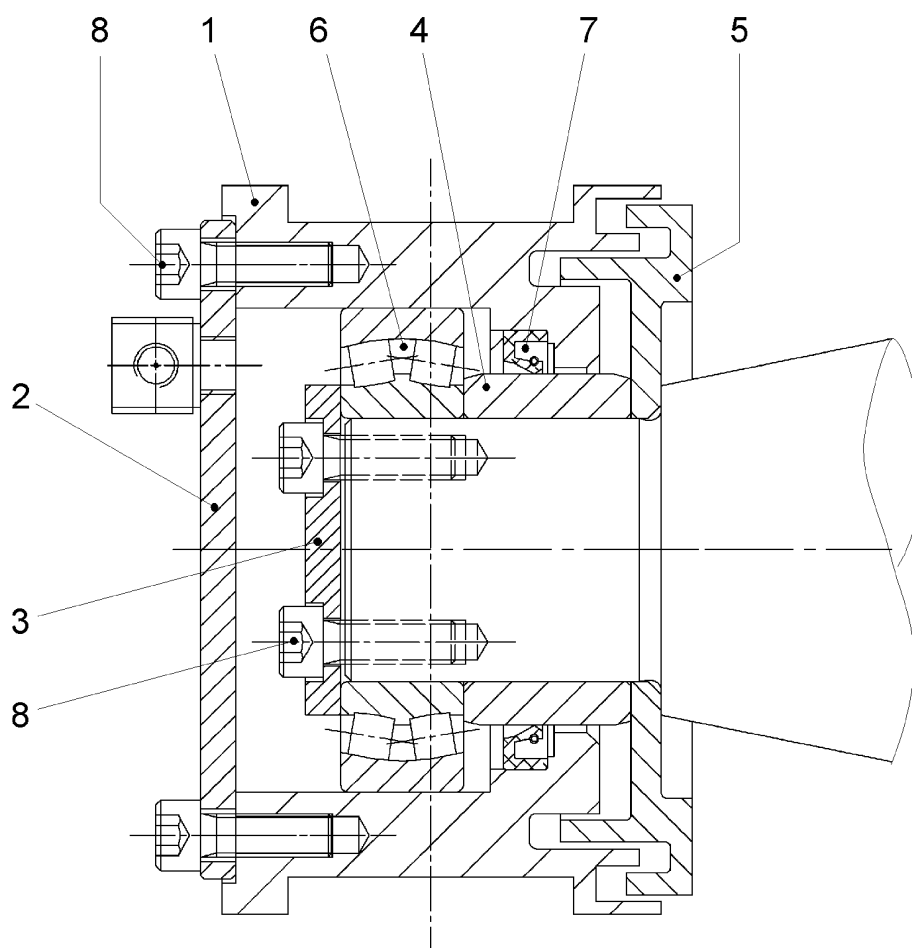
project designation
42658 BWG 800/320/4 AA = 110,00m

In case of orders and inquiries
please indicate project and
article-no!

denomination	article-no.
tension brg,loose side	30015506

family	characteristics/dimensions
714017	80

drawing
30015506

page
16

project designation
42658 BWG 800/320/4 AA = 110,00m

In case of orders and inquiries
 please indicate project and
 article-no!

denomination article-no.
tension brg, fixed side 30015516

family characteristics/dimensions drawing
714016 80/M18x1 30015516

page
17

quantity of order

	item	article	quantity	denomination	characteristics/dimensions	material	norm	weight
	1	30015507	1	tension bearing bod	80	10570		24,060
	2	08493690	1	bearing lid	80/M18x1	10038		2,000
	3	00584890	1	end lid	80			0,500
	4	00347390	1	bush	105/80/48	10503		1,000
	5	30015151	1	labyrinth seal	80	10570		2,600
	6	00069270	1	bearing	22216		635	2,050
	7	00220870	1	shaft sealing ring	A105x130x12	NB	3760	0,050
	8	00090370	6	cheese-head screw	M10x25	8.8	912	0,026
	9	00347790	1	bush	140/128/28	10308		0,570
	10	00346990	1	bush	140/128/6	10308		0,120
	11	00946470	1	closing plug	18,4		2 281	0,020

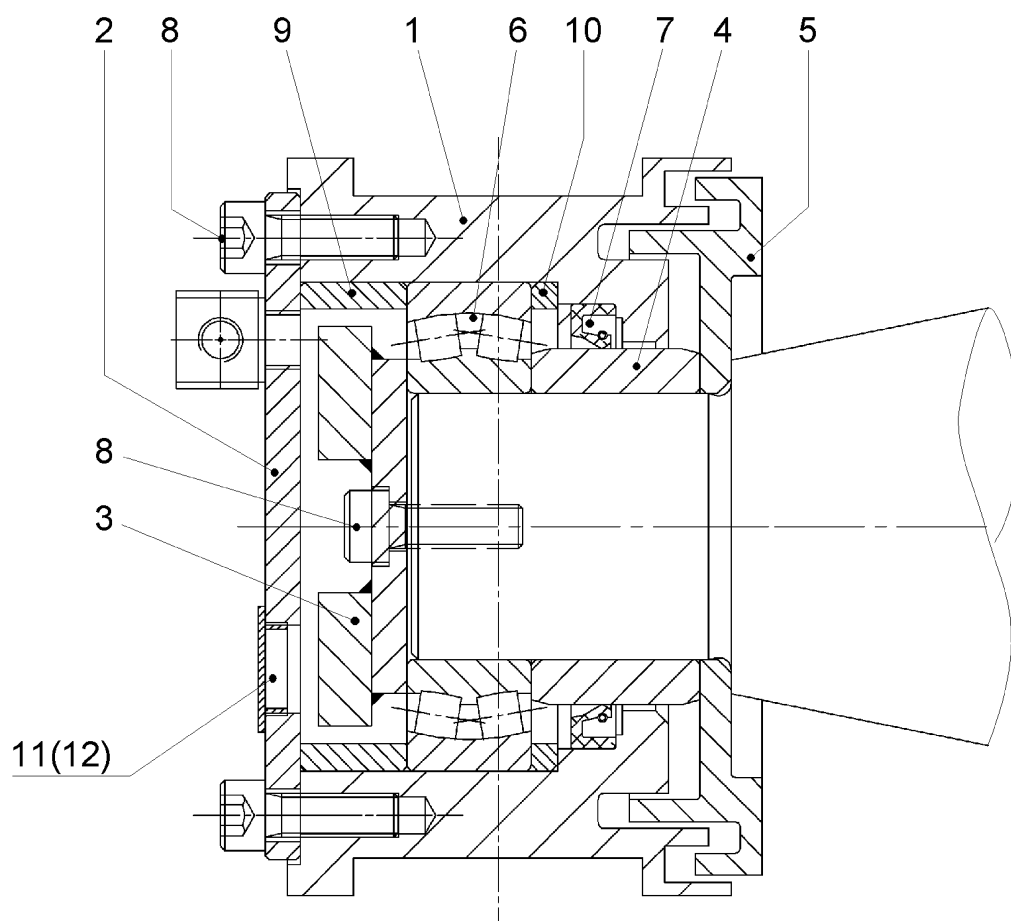
project designation
42658 BWG 800/320/4 AA = 110,00m

In case of orders and inquiries
please indicate project and
article-no!

denomination article-no.
tension brg, fixed side 30015516

family characteristics/dimensions drawing
714016 80/M18x1 30015516

page

18

project designation
42658 BWG 800/320/4 AA = 110,00m

In case of orders and inquiries
 please indicate project and
 article-no!

denomination article-no.
Parallel tensioning device 21645151

family characteristics/dimensions drawing
714015 800/1150 21645151

page
19

quantity of order

	item	article	quantity	denomination	characteristics/dimensions	material	norm	weight
	1	13304590	1	tension weight	800			867,100
	2	07544990	2	Rack	1150-1280	17225		12,000
	3	13599790	2	butting strip	1150-1280			14,700
	4	06932290	2	tension spindle	1150-1280			36,411
	5	06935190	2	spindle guide	630-1600			2,900
	7	00116070	20	hexagonal screw	M16x90	8.8	931	0,171
	8	00155370	40	hexagonal nut	M16	8	934	0,033
	9	00330670	40	disc	17	St	9021	0,041
	10	00137370	8	hexagonal screw	M12x35	8.8	933	0,044
	11	00154670	8	hexagonal nut	M12	8	934	0,017
	12	00021370	8	spring ring	A12	FSt	127	0,004

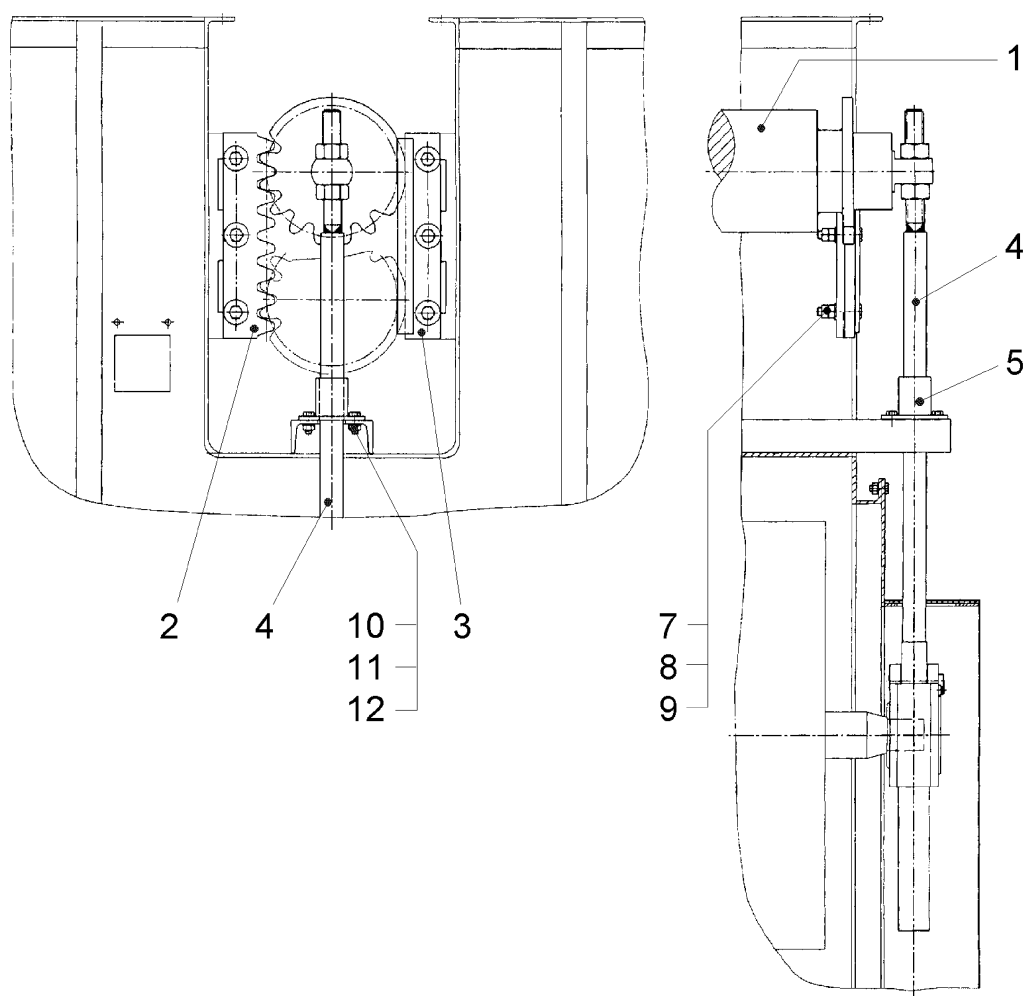
project designation
42658 BWG 800/320/4 AA = 110,00m

In case of orders and inquiries
please indicate project and
article-no!

denomination article-no.
Parallel tensioning device 21645151

family characteristics/dimensions drawing
714015 800/1150 21645151

page
20



project designation
42658 BWG 800/320/4 AA = 110,00m

In case of orders and inquiries
 please indicate project and
 article-no!

denomination article-no.
straight-run control 20691251

family characteristics/dimensions drawing
725003 Initiator 40x40 20691251

page
21

quantity of order

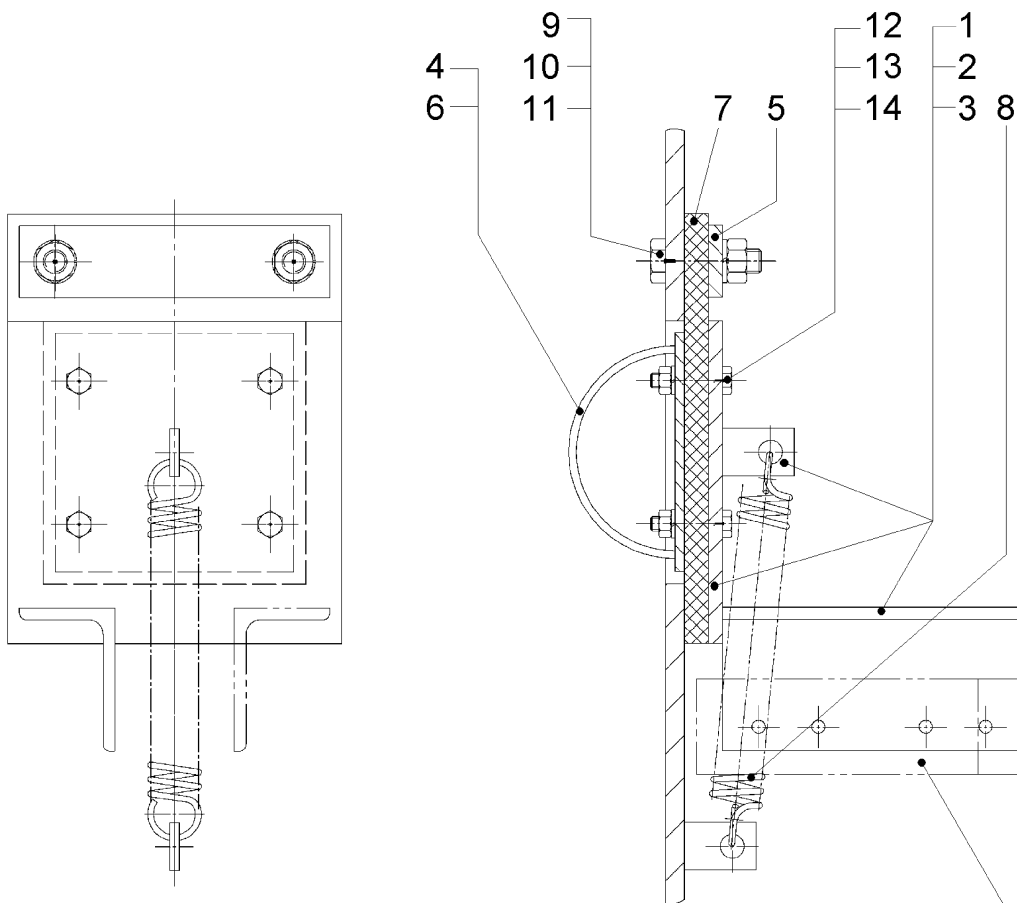
	item	article	quantity	denomination	characteristics/dimensions	material	norm	weight
	1	00474570	1	plate	6	10038		0,900
	2	00364070	1	angle	60x40x5	10038	1029	0,470
	3	00471070	2	plate	4	10038		0,020
	4	00471070	1	plate	4	10038		0,320
	5	00510870	1	flat steel	6x30	10038	1017	0,190
	6	00396570	1	pipe	88,9x3,2	10112	2458	0,300
	7	00608290	1	rubber strip	10x140x180	93903		0,400
	8	00601390	1	tension spring	20x2,5x165	14310	2097	0,135
	9	00106870	2	hexagonal screw	M10x40	8.8	931	0,035
	10	00154370	2	hexagonal nut	M10	8	934	0,012
	11	00021070	2	spring ring	A10	FSt	127	0,003
	12	00130770	4	hexagonal screw	M6x30	8.8	931	0,008
	13	00159770	4	hexagonal nut	M6	14301	934	0,003
	14	00023570	4	spring ring	A6	FSt	127	0,001

project designation
42658 BWG 800/320/4 AA = 110,00m

In case of orders and inquiries
please indicate project and
article-no!

denomination article-no.
straight-run control 20691251

family characteristics/dimensions drawing page
725003 Initiator 40x40 20691251 22



siehe Zubehör / see accessories /
voir accessoires / a ver accesorios

project designation
42658 BWG 800/320/4 AA = 110,00m

In case of orders and inquiries
 please indicate project and
 article-no!

denomination article-no.
belt bucket strand 30060926

family characteristics/dimensions drawing
814000 800/320 30053115

page
23

quantity of order

	item	article	quantity	denomination	characteristics/dimensions	material	norm	weight
	1	30060318	1	steel cord belt	850/H20/213490			4917,081
	2	30031346	528	bucket	K800/320/4-4			0,000
	3	30031347	3	bucket	K800/320/4-4			0,000
	4	08689090	531	profiled rubber str	140x650			1,300
	5	21580951	1	clamping connection	800			40,048
	6	00333070	3800	plate screw	M12x60	4.6	15237	0,142
	7	00154670	7600	hexagonal nut	M12	8	934	0,017
	8	00332770	3800	disk washer	14		15237	0,020
	9	21581951	1	cast.compound box	800			9,475
	10	01108870	160	rope clamp	5		1142	0,020
	11	00016611	6	casting compound	F-2			2,230
	12	30041307	16	round	20x12,6	33206		0,010
	13	30031047	1	fabric stip	4,8x400			1,150
	14	00834870	1	vulcanizing agent	SC2000			1,000
	15	00793770	1	hardener	SC2000			0,040

project	designation
42658	BWG 800/320/4 AA = 110,00m

In case of orders and inquiries
please indicate project and
article-no!

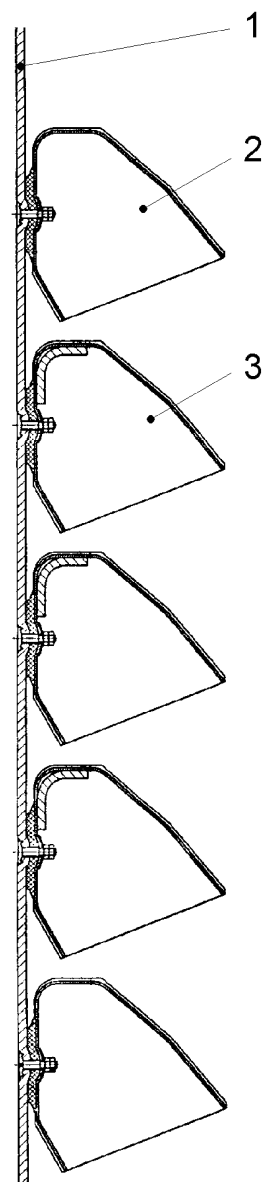
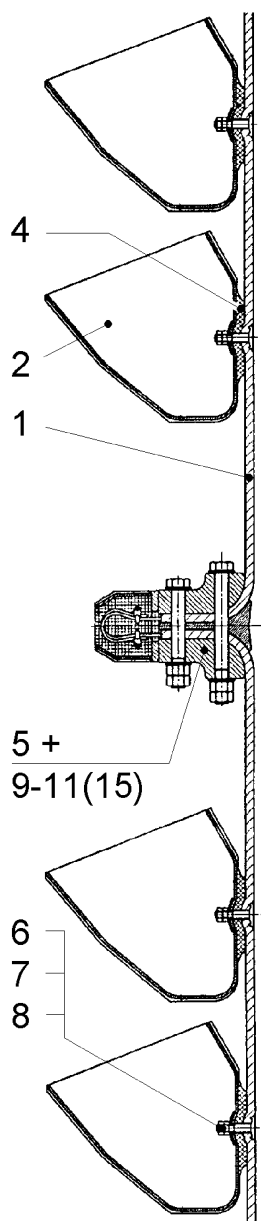
denomination

belt bucket strand

article-no.
30060926

family	characteristics/dimensions
814000	800/320

drawing
30053115

page
24

project designation
42658 BWG 800/320/4 AA = 110,00m

In case of orders and inquiries
 please indicate project and
 article-no!

denomination article-no.
drive unit 30060964

family characteristics/dimensions drawing
191202 B3DH12/FAD516/EOC 30056576

page
25

quantity of order

	item	article	quantity	denomination	characteristics/dimensions	material	norm	weight
	1	00055881	1	3-phase current mot	1LG4316-4AA			955,000
	2	30020448	1	gear box	B3DH12/L			2363,000
	5	20173951	1	hydraulic coupling	516-EOC			104,000
	6	21281151	1	torque support	92kN/280			38,308
	7	20174251	2	fusible plug	FL/160°			0,040
	11	00042681	1	Inductive Sensor	BIM-G18-Y1/S926			0,230
	12	30040658	1	speed monitoring	EWD/20-250VUC			0,700
	13	30010213	1	Inductive Sensor	Bi5-G18-Y1			0,230
	14	30040658	1	speed monitoring	EWD/20-250VUC			0,700
	15	00156670	4	hexagonal nut	M24	8	934	0,110
	16	00017670	4	washer	A25	10038	125	0,032
	17	00022070	4	spring ring	A24	FSt	127	0,026
	18	00121370	4	hexagonal screw	M24x140	8.8	931	0,595

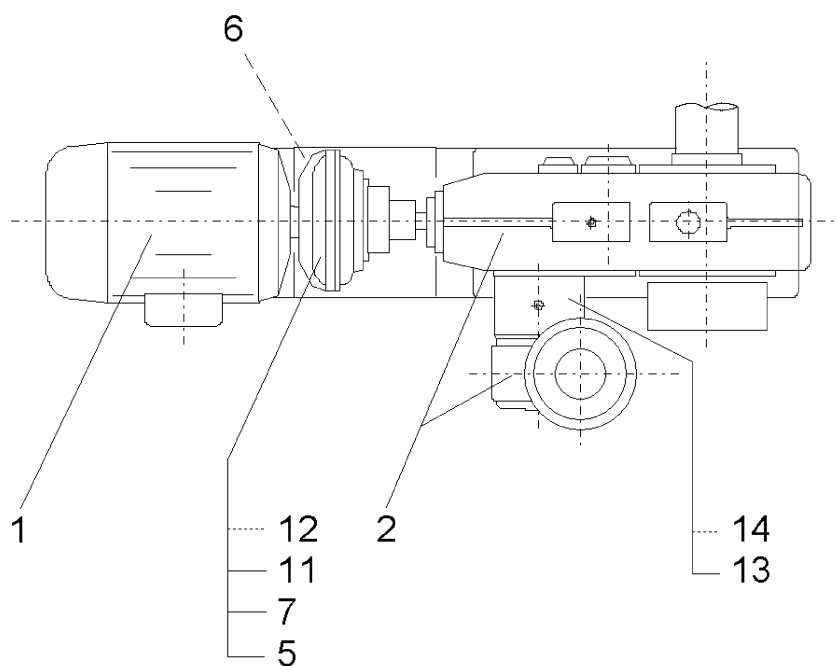
project designation
42658 BWG 800/320/4 AA = 110,00m

In case of orders and inquiries
please indicate project and
article-no!

denomination article-no.
drive unit 30060964

family characteristics/dimensions drawing
191202 B3DH12/FAD516/EOC 30056576

page
26



project designation
42658 BWG 800/320/4 AA = 110,00m

In case of orders and inquiries
 please indicate project and
 article-no!

denomination article-no.
accessories 30035323

family characteristics/dimensions drawing
191205 AD/NJ5/MS24/NCB15

page
27

quantity of order

	item	article	quantity	denomination	characteristics/dimensions	material	norm	weight
	1	30030405	1	level monitoring	AD311			1,972
	2	00976890	1	Inductive Sensor	NJ5-18GK-N-150			0,150
	3	30025708	1	speed monitoring	MS24-112R20-250V			0,300
	4	00064981	4	Inductive Sensor	NCB15+U1+U			0,160
	5	01620290	4	assembly tools	4-2057			0,100
	6	00003770	8	cap screw	M5x16	14301	84	0,003
	7	00159270	8	hexagonal nut	M5	14301	934	0,001
	8	00023270	8	spring ring	A5	14301	127	0,001

project designation
42658 BWG 800/320/4 AA = 110,00m

In case of orders and inquiries
please indicate project and
article-no!

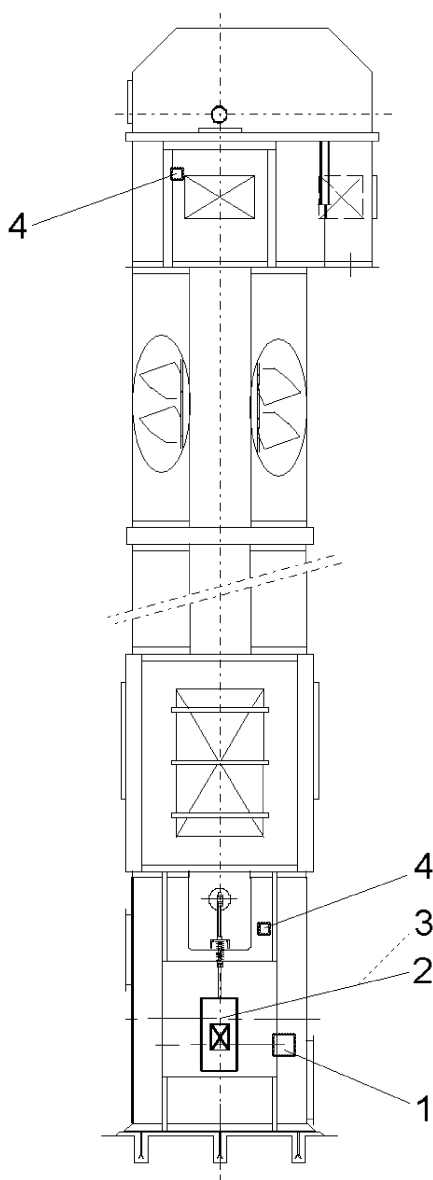
denomination article-no.
accessories 30035323

family characteristics/dimensions
191205 AD/NJ5/MS24/NCB15

drawing

page

28



project	designation
42658	BWG 800/320/4 AA = 110,00m

In case of orders and inquiries
please indicate project and
article-no!

denomination	article-no.
level monitoring	30030405

family	characteristics/dimensions
829111	AD311

drawing

page

29

quantity of order

	item	article	quantity	denomination	characteristics/dimensions	material	norm	weight
	1	30026226	1	diaphragm switch	AD311			1,900
	2	00151370	6	hexagonal screw	M6x35	8.8	933	0,008
	3	00159770	6	hexagonal nut	M6	14301	934	0,003
	4	00023570	6	spring ring	A6	FSt	127	0,001

project designation
42658 BWG 800/320/4 AA = 110,00m

In case of orders and inquiries
please indicate project and
article-no!

denomination article-no.
level monitoring 30030405

family characteristics/dimensions
829111 AD311

drawing

page
30

Ohne Abbildung

Die Liste auf der vorhergehenden Seite erfordert normalerweise keine Abbildung.

In Zweifelsfällen nehmen Sie bitte den Einbauplan zur Hilfe.

Without illustration

Normally, the list on the previous page does not require an illustration. If you have any doubts, please refer to the installation drawing.

Sans illustration

Normalement, la liste sur la page précédente, n'a pas besoin d'une illustration.

Si vous avez des doutes, veuillez vous référer au plan d'installation.

Sin ilustración

Normalmente, no es necesario una ilustración para la lista en la página anterior.

En caso de duda, veáse el plano de montaje.

Без рисунка

Для списка на предыдущей странице обычно не требуется рисунка.

**В случае сомнений,
пожалуйста, воспользуйтесь монтажным чертежом.**